

10 things

to see, hear and do this weekend

ELISSA BLAKE AND SHARNE WOLFF



FAMILY DAISY MOON WAS BORN THIS WAY

Daisy Moon is president and founder of the Little Club for Misfits. She's the club's only member. Her brother Noah is an elite athlete. They both dream big but they're stuck in a world too small. From Emily Sheehan, a new play for young audiences about making mistakes and learning to love yourself anyway. **Until November 25, Joan Sutherland Performing Arts Centre, Penrith, \$50-\$55, thejoan.com.au.**



ROCK TROPICAL F---STORM

Drones mainspring Gareth Liddiard's latest project (with bassist Fiona Kitchin, drummer Lauren Hammett and guitarist Erica Dunn) will be dropping a series of 7" singles in coming months. Hear them delivered in bracing live fashion this weekend. **Saturday November 25, Sunday, November 26, Lansdowne Hotel, Chippendale, \$23.50, thelansdownepub.com.au.**



THEATRE THE CARETAKER

Harold Pinter's 1959 play triangulates two disparate brothers and a homeless man to explore identity, belonging, loneliness and family. This Throwing Shade production features Alex Bryant-Smith and Andrew Langcake as the siblings, and Nicholas Papademetriou as the interloper. **Until December 2, Actors Pulse, Redfern, \$30-\$35, throwingshade.com.au.**



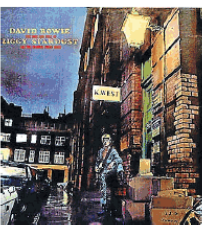
ART GUIDA DEL GIARDINO

Employing his trademark style, Alexander McKenzie delivers his guide to Italian gardens in this latest display of paintings. Always still, mysterious and devoid of any human presence, McKenzie's romantic landscapes seduce with their intriguing take on nature. **Until December 10, Tuesday-Sunday, 10.30am-6pm, Martin Browne Contemporary, Paddington, free, martinbrownecontemporary.com.**



CLASSIC ROCK ZIGGY

Jeff Duff, Steve Balbi (Noise-works) and Brydon Slace (INXS) lead this musical tribute to David Bowie (who would have turned 70 this year) and his extra-terrestrial, pan-sexual alter ego Ziggy Stardust. **Saturday November 25, Enmore Theatre, \$90.75, enmoretheatre.com.au.**



THEATRE NIGHT SLOWS DOWN

Phillip Rouse's new play is set in a near future in which a far-right government has been elected, a world where facts are dismissed as fake news, where experts are derided for their expertise. Couldn't happen, right? Andre de Vanny, Danielle King and Johnny Nasser feature. **Until December 9, Kings Cross Theatre, Kings Cross, \$30-\$35, kingscrosstheatre.com.**



DANCE AFTERGLOW

ACT's final AFTERGLOW project for the year springs from First Nations choreographers Thomas ES Kelly (a work titled *Shifting-Shapes*) and Cheryn Frost, whose *Fern Menace* is co-created with Tahlee Leeson and Cath McNamara. **Until November 25, PACT, Erskineville, single show \$20-\$25 / double bill \$30-\$40, pact.net.au.**



ART OUT OF LINE

Tomorrow is the last day to catch this display of contemporary drawings. A nod to the fundamental nature of the medium, the exhibition's roll call of over 20 artists includes Noel McKenna, Catherine O'Donnell and Paul White. All are welcome to attend Sunday afternoon's artist panel conversation, Drawing Conclusions. Panel conversation, **Saturday, November 25, 1-2pm; exhibition open Friday, November 24 and Saturday, November 25, 10-5pm, free, Mayspace, Waterloo, mayspace.com.au.**



Reunited in 2016 after a hiatus, Brisbane's *I Heart Hiroshima* refreshed their sound with the *Spillin' the Light* EP last December. You'll hear that plus old faves like *London in Love* and *Fifty Three* tonight. **Friday November 24, Factory Theatre, Marrickville, \$18.50, factorytheatre.com.au.**

the Shortlist team

editor: Martin Boulton mboulton@fairfaxmedia.com.au
chief sub-editor, sections: Lisa Stones advertising: Tynan McCarthy 8667 3271
cover: Muse cover design: Marija Ercegovac

Subscribers get

Curated content
Go behind the stories
SMH Live
Today's paper online

Australia's leading journalists
Latest breaking news
Sydney's newspaper
First look content
News you can trust
Access on the go

Exclusive news experience
Meet the journalists
Award-winning Journalism
Cancel or change at any time

Your curated news experience
Convenient home delivery
Access on all devices
Subscriber First

Exclusive subscriber events
Sydney's newspaper
Unlimited access
Independent coverage of local national and global news
Exclusive events

News you can trust
Exclusive offers
iPad app
Meet the journalists
SMH Live
Award-winning Journalism
Cancel or change at any time
Independent thinkers

for less than \$1 a day.

Enjoy digital access & your weekend papers delivered

Q Search SMH subscribe

13 66 66

The Sydney Morning Herald
INDEPENDENT. ALWAYS.

6665 a week for a Digital Access & Weekend Papers subscription only. Other subscription types are available. Subscriptions automatically renew monthly or annually unless the subscriber calls 13 66 66 and cancels. Customer Services hours of operation are 9am to 5pm AEST Monday to Friday only. For full subscription conditions please see www.smh.com.au/conditions/terms18001